



## Installation and User Instructions

### Electric Slot Toaster LT4X and LT6X

Please make a note of your product details for future use:

Date Purchased: \_\_\_\_\_

Model Number: \_\_\_\_\_

Serial Number: \_\_\_\_\_

Dealer: \_\_\_\_\_

\_\_\_\_\_

Please read the following carefully before commencing work on this equipment

### WARNING AND PRECAUTIONS

**This appliance must be installed by a competent installation engineer, in accordance with the installation instructions and all relevant local and national standards including the following:**

- **Health and Safety at Work Acts**
- **IEE regulations**
- **BS Codes of Practice**
- **Local and National Building Regulations**
- **Fire Precautions Act 1971**
- **EN 60335-1 1994 and EN 60335-2-48 1997**

**It is mandatory that all appliances are installed, commissioned and serviced by a qualified and competent person as defined by the regulations in force in the country of installation.**

**Failure to do so may invalidate the warranty.**

**! If the supply cord is damaged it must be replaced by the manufacturer or its service agent or a similarly qualified person in order to avoid a hazard.**

### SECTION 1 - TECHNICAL DATA

<b>Model number</b>	<b>LT4X</b>	<b>LT6X</b>
Overall height (mm)	245	245
Width (mm) inc handles	390	480
Depth (mm) (excluding controls)	220	220
Weight (Kg)	6	7.5
Electricity supply requirements	Single phase 9.4 Amps	Single phase 12.5Amps
Electricity supply connection	Single phase 13A plug	Single phase 13A plug
Power rating @240V (kW)	2.2	3

### Check list of enclosures

Please ensure that the following items are included with this piece of equipment

<b>Model</b>	<b>LT4X</b>	<b>LT6X</b>	<b>Tick</b>
Crumb tray (fitted in the toaster base)	1	1	
User instructions	1	1	
Guarantee card	1	1	

## **SECTION 2 - INSTALLATION**

### **2.1 PREPARATION**

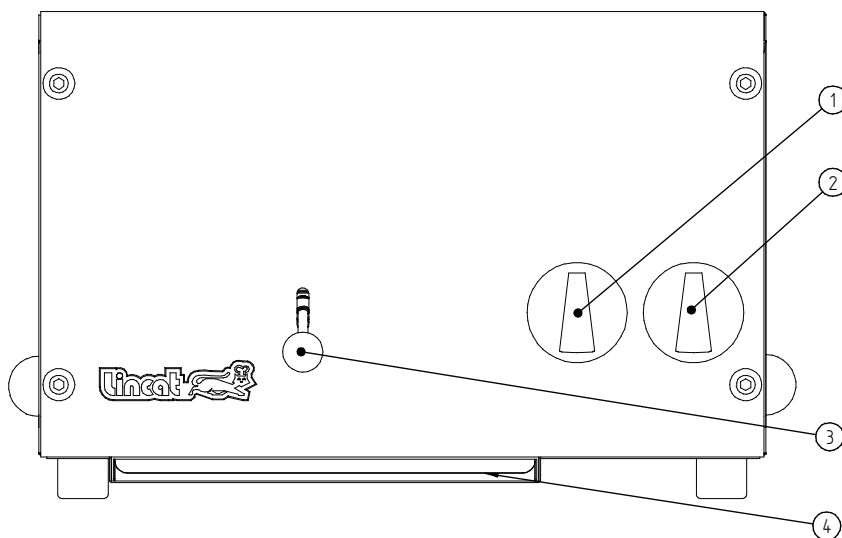
Remove all packaging materials and protective coatings from both the outer body and the crumb tray prior to installation.

### **2.2 SITING**

The appliance must be installed in accordance with the instructions listed below.

1. Ensure there is a free flow of air and adequate ventilation around the appliance, and that no vents are blocked.
2. Ensure that the connection point to the wall socket is easily accessible and not either above or behind the toaster.

## 2.3 COMMISSIONING



1. Slot Selector.
2. Timer Control.
3. Toast Lifting Lever.
4. Crumb Tray.

**Figure 1.**

## SWITCHING ON

1. Set the timer knob in the off position (knob vertical).
2. Plug in the toaster and switch on the socket.
3. Set the slot selector to the maximum number of slots.
4. Turn the timer control knob clockwise to four minutes.
5. Run the unit through two four minute timed cycles, without product in the slots, in order to remove any surface contaminants from the elements.

## 2.4 USER INSTRUCTION

Ensure that the person responsible understands how to safely operate, clean and shut down this appliance and is made aware of the position of the isolating switch.

**Note: This manual must be kept in a safe and accessible place for future reference.**

## SECTION 3 OPERATION

1. Set the timer knob in the off position (knob vertical).
2. Plug in the toaster and switch on the socket.
3. Select the number of slots required. The slots are ordered with slot 1 on the left hand side of the unit.
4. With the lift lever in the down position, load the bread and raise the lever to lower the bread.
5. Using the timer control select the toasting time required. The markings are 1 to 4 minutes. Usually a setting of 2 minutes will give satisfactory results. This time will vary dependant on the freshness, the type of bread used and the level of browning required.
6. At the end of the set time the elements will automatically turn off.
7. To remove the toast from the slots lower the toast lift lever.

Avoid lifting the bread during the toast cycle as this can lead to uneven toasting and may cause the bread to stick to the element guards. Should the appliance fail to operate, consult a qualified electrical engineer.

## **SECTION 4 CLEANING**

**Before carrying out any cleaning or maintenance of your toaster, isolate it from the power supply.**

For best results wipe down the outside surface with a mild detergent solution and dry immediately.

Regularly check the crumb tray and empty as necessary.

Do not use any hard or metal objects to clean any crumbs etc from the inside of the unit.

Do not abrasives.

Do not use any products containing chlorine to clean stainless steel surfaces.

Do not clean the appliance using a water jet.

## **SECTION 5 SERVICE AND MAINTENANCE**

All Lincat toasters are fully guaranteed for parts and labour for a period of 12 months (except LTX toaster elements).

### **5.1 Routine service**

**We recommend that all servicing, other than routine cleaning, be carried out by our authorised service agents.**

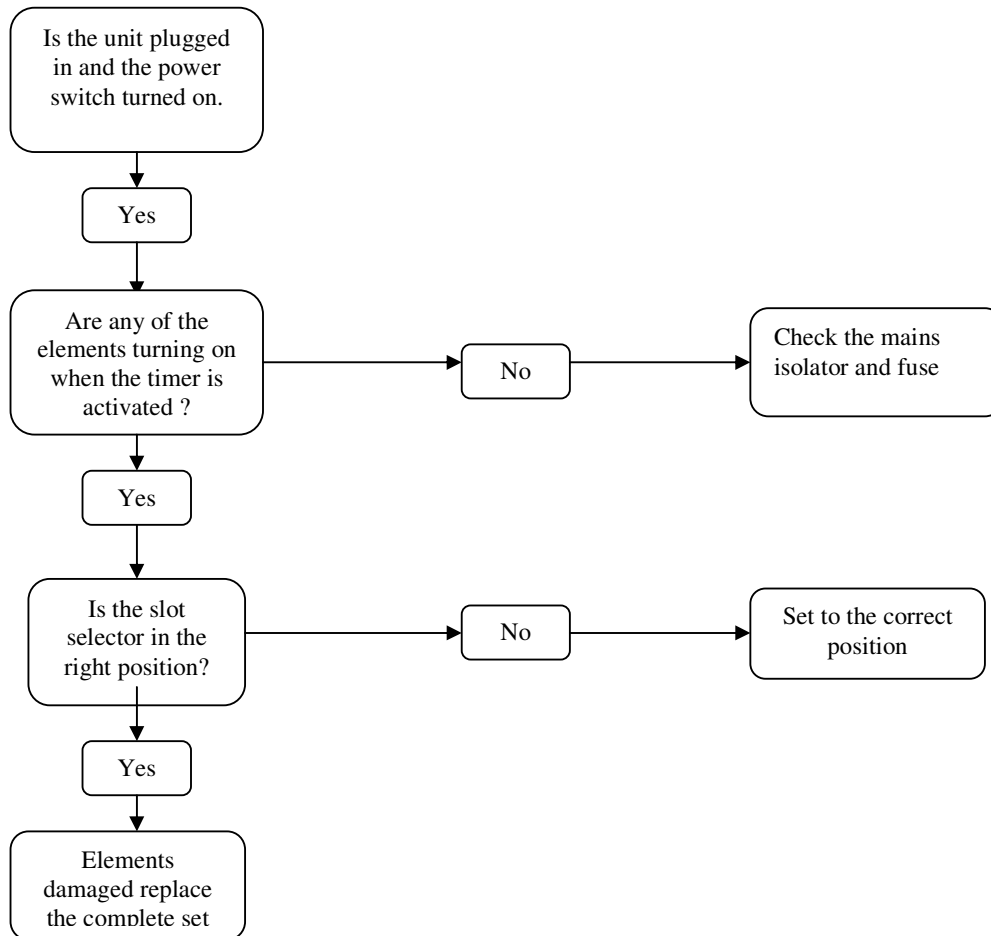
1. Carry out a general check on the installation paying particular attention to the following:-

- Is the supply cable in good condition.
- Is it isolating switch easily accessible.
- Check the elements for damaged / broken heating wires.

2. Check all components for correct operation and replace where necessary.

## 5.2 Fault finding

### Toaster will not heat up



**Figure 2 Fault Finding**

**LINCAT SERVICE HELP DESK**

**☎ 01522 875520**

**LINCAT SPARES HELP DESK**

**☎ 01522 875510**

## **CONDITIONS OF GUARANTEE**

The guarantee does not cover:-

- 1) Element failure in LTX units.
- 2) Accidental breakage or damage
- 2) Operational misuse, wear and tear from normal usage, incorrect adjustment, or neglect.
- 3) Incorrect installation, maintenance, modification or unauthorised service work.